

PART OF SW 1/4 OF NE 1/4  
SECTION 20, T.6N., R.1W., S.L.B. & M.

114-1

IN OGDEN CITY  
SCALE 1" = 60'

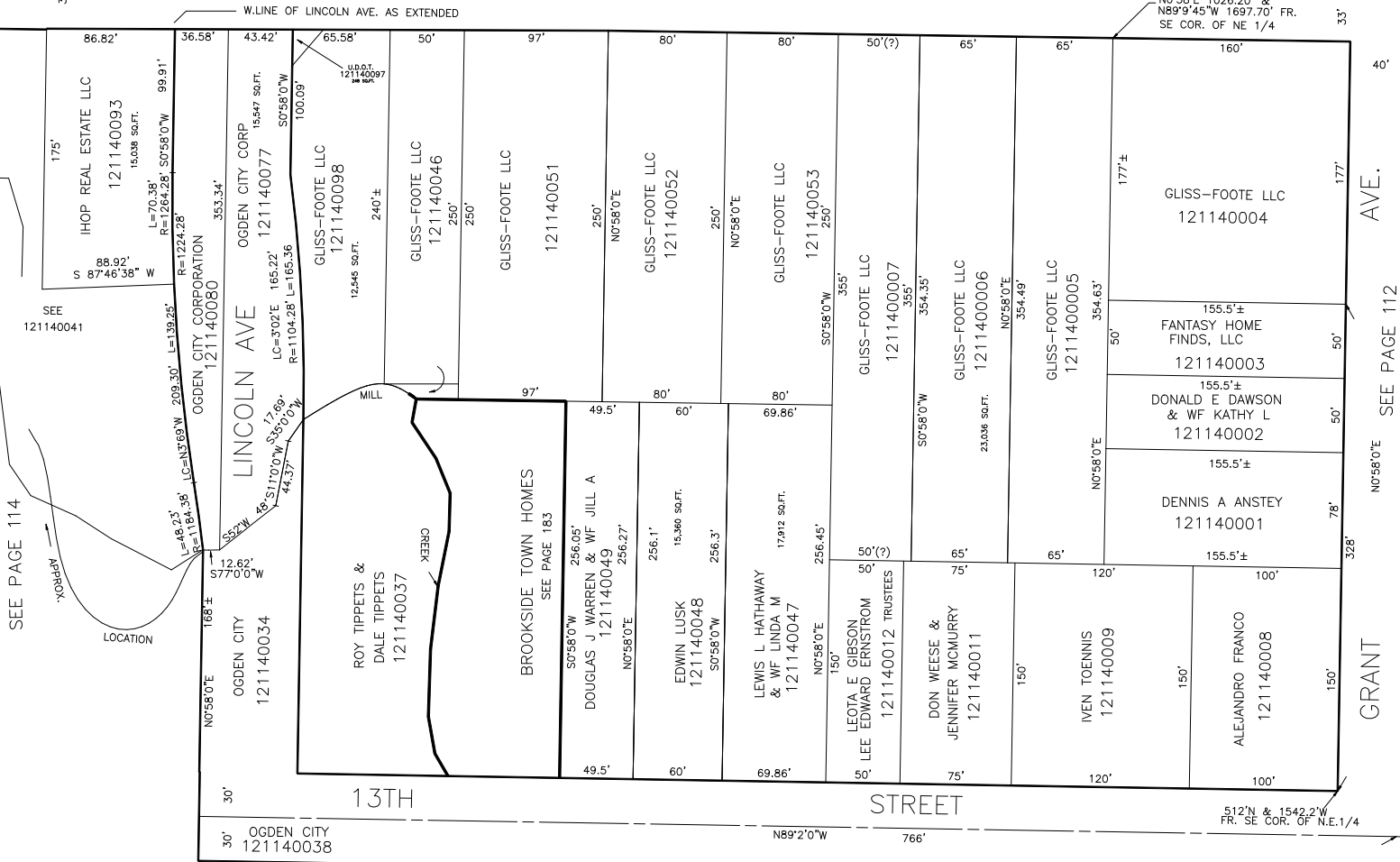
TAXING UNIT: 25

SEE PAGE 114

CHILDS AVE.  
N0°58'0"E

12TH STREET

STREET



SEE PAGE 114

AVE.

SEE PAGE 112

N0°58'0"E

GRANT

SEE PAGE 114-2